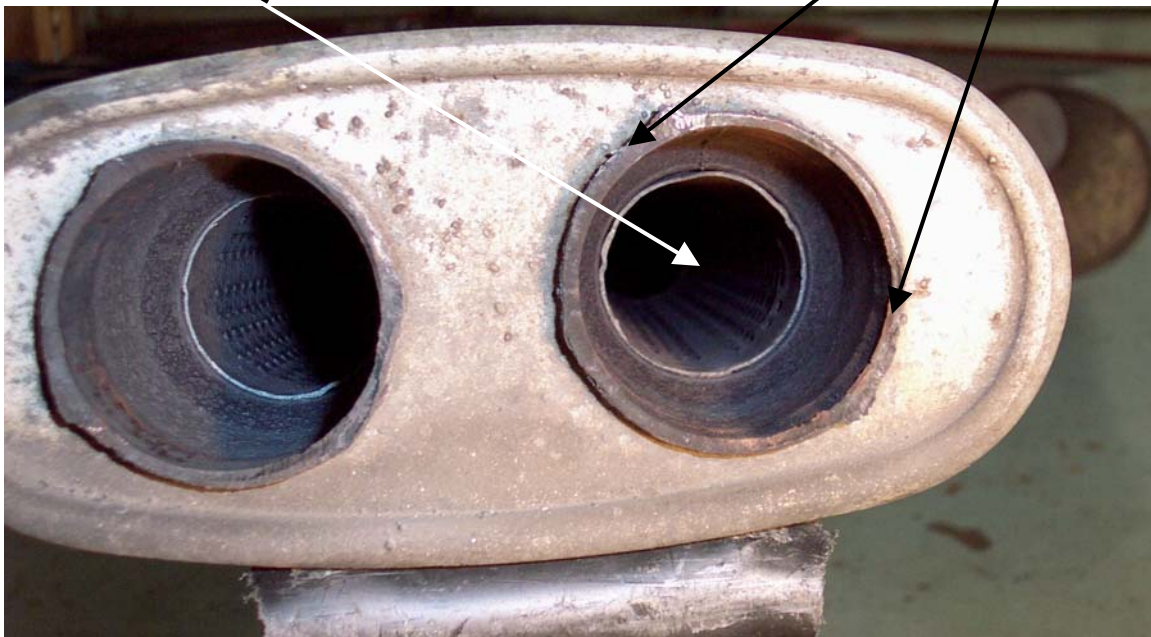


## High Exhaust Backpressure On Early Cars

The '90 – '92 cars lose about 20 horsepower to the OE exhaust system. The '93 and up cars lose only about 10 horsepower. The OE exhaust pipes are 2 ¾" on all ZR-1's. On the early cars the resonator is a major exhaust flow restriction. The picture pretty much tells the whole story why.

The 2 ¾" OD pipe reduces to 2 ¼" OD at the inlet of the resonator.

The core of the resonator reduces the inlet to 1 5/8" ID.



After viewing the picture it's easy to see why there is so much power loss.

The resonator ID is 2 ¼" on the '93 and up systems. The late exhaust system is a nice upgrade for an early car if a power increase is desired without the additional loudness that accompanies aftermarket exhaust systems. +10 hp can be gained if it is used on a stock early engine.

A late ZR-1 exhaust system is difficult to find. The LT1 exhaust system that was used from '92 to '96 uses the 2 ¼" ID resonator. The LT1 system has a different inlet pipe configuration. The LT1 system can be adapted to the ZR-1 if ZR-1 style inlet pipes are fabricated.